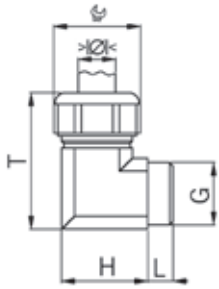


# 尼龙 90° 弯接头

## Synthetic cable glands elbow 90°

### 公制螺纹 | Entry thread metric



材质: 聚酰胺PA 6  
 密封件: TPE  
 温度范围: -20°C / +100°C  
 防护等级: IP68

Material: Polyamide PA 6  
 Seal: TPE  
 Temperature range: -20°C / +100°C  
 Protection class: IP 68



灰色 RAL 7032  
 单体密封件

Grey RAL 7032  
 One-piece sealing insert

G	$\gt;\varnothing<$ min mm	$\gt;\varnothing<$ max mm	 mm	H mm	T mm	L mm	型号   Art. No.	
M16x1.5	6.5	9.5	19	23	38	8	5215.17.95	25
M20x1.5	7.0	10.5	24	28	46	9	5215.20.105	25
M20x1.5	9.0	13.0	24	28	46	9	5215.20.13	25
M25x1.5	11.5	15.5	27	32	52	10	5215.25.155	25



黑色RAL9005  
 单体密封件

Black RAL 9005  
 One-piece sealing insert

G	$\gt;\varnothing<$ min mm	$\gt;\varnothing<$ max mm	 mm	H mm	T mm	L mm	型号   Art. No.	
M16x1.5	6.5	9.5	19	23	38	8	5215.17.40.95	25
M20x1.5	7.0	10.5	24	28	46	9	5215.20.40.105	25
M20x1.5	9.0	13.0	24	28	46	9	5215.20.40.13	25
M25x1.5	11.5	15.5	27	32	52	10	5215.25.40.155	25

### Pg 螺纹 | Entry thread Pg



灰色 RAL 7032  
 单体密封件

Grey RAL 7032  
 One-piece sealing insert

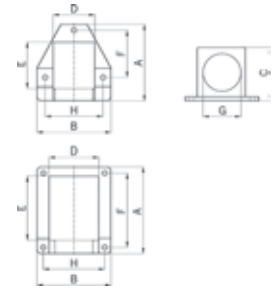
G	$\gt;\varnothing<$ min mm	$\gt;\varnothing<$ max mm	 mm	H mm	T mm	L mm	型号   Art. No.	
Pg 9	4.5	6.5	19	23	38	8	5215.09.65	25
Pg 9	6.5	9.5	19	23	38	8	5215.09.95	25
Pg 11	7.0	10.5	22	25	42	9	5215.11.105	25
Pg 11	4.0	6.5	22	25	42	9	5215.11.65	25
Pg 11	6.5	9.5	22	25	42	9	5215.11.95	25
Pg 13	7.0	10.5	24	28	46	9	5215.13.105	25
Pg 13	9.0	13.0	24	28	46	9	5215.13.13	25
Pg 13	6.5	9.5	24	32	46	9	5215.13.95	25
Pg 16	7.0	10.5	27	32	52	10	5215.16.105	25
Pg 16	9.0	13.0	27	32	52	10	5215.16.13	25
Pg 16	11.5	15.5	27	32	52	10	5215.16.155	25
Pg 16	6.5	9.5	27	32	52	10	5215.16.95	25

# 尼龙 90° 法兰弯接头 Synthetic flanged elbow 90°

公制螺纹 | Entry thread metric

材质: 聚酰胺  
密封件: NBR  
温度范围: -40°C / +110°C  
防护等级: IP65  
性能: 法兰弯接头可以打开插入电缆, 从而实现便捷安装

Material: Polyamide  
Seal: NBR  
Temperature range: -40°C / +110°C  
Protection class: IP 65  
Properties: The flanged elbow can be opened to insert the cables and therefore permits an effortless installation



灰色								Grey		
G	A mm	B mm	C mm	D mm	E mm	F mm	H mm		型号   Art. No.	
M16x1.5	49	47	35	22	27	29	37	3	5500.20.17	10
M20x1.5	49	47	35	22	27	29	37	3	5500.20.20	10
M25x1.5	69	65	44	30	31	42	52	3	5500.20.25	10
M32x1.5	90	78	55	40	65	65	65	4	5500.20.32	10
M40x1.5	100	94	66	48	68	80	80	4	5500.20.40	5
M50x1.5	116	101	76	63	85	88	88	4	5500.20.50	5

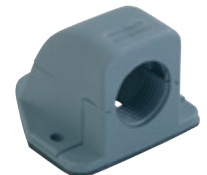


黑色								Black		
G	A mm	B mm	C mm	D mm	E mm	F mm	H mm		型号   Art. No.	
M16x1.5	49	47	35	22	27	29	37	3	5500.40.17	10
M20x1.5	49	47	35	22	27	29	37	3	5500.40.20	10
M25x1.5	69	65	44	30	31	42	52	3	5500.40.25	10
M32x1.5	90	78	55	40	65	65	65	4	5500.40.32	10
M40x1.5	100	94	66	48	68	80	80	4	5500.40.40	5
M50x1.5	116	101	76	63	85	88	88	4	5500.40.50	5



Pg 螺纹 | Entry thread Pg

灰色								Grey		
G	A mm	B mm	C mm	D mm	E mm	F mm	H mm		型号   Art. No.	
Pg 11	49	47	35	22	27	29	37	3	5520.11	10
Pg 16	49	47	35	22	27	29	37	3	5520.16	10
Pg 21	69	65	44	30	31	42	52	3	5520.21	10
Pg 29	90	78	55	40	65	65	65	4	5520.29	10
Pg 36	100	94	66	48	68	80	80	4	5520.36	5
Pg 48	116	101	76	63	85	88	88	4	5520.48.48	5



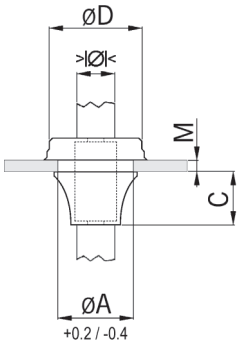
黑色								Black		
G	A mm	B mm	C mm	D mm	E mm	F mm	H mm		型号   Art. No.	
Pg 11	49	47	35	22	27	29	37	3	5540.11	10
Pg 16	49	47	35	22	27	29	37	3	5540.16	10
Pg 21	69	65	44	30	31	42	52	3	5540.21	10
Pg 29	90	78	55	40	65	65	65	4	5540.29	10
Pg 36	100	94	66	48	68	80	80	4	5540.36	5
Pg 48	116	101	76	63	85	88	88	4	5540.48.48	5



# 快速密封电缆扣

## Quickseal cable grommets

### 公制标准 | Metric rating



材质: EPDM  
 温度范围: -40°C / +110°C  
 防护等级: IP67  
 性能: 无卤素, 凭借“单向膜”实现IP67全面防护等级, 良好的耐化学和耐候性  
 应用: M16 - M50适用于1 - 4mm的开孔, M12适用于0.5mm-2mm

Material: EPDM  
 Temperature range: -40°C / +110°C  
 Protection class: IP 67  
 Properties: Halogen-free, all-round IP 67 protection thanks to the “pushout-membrane”, resistant to chemicals and weatherproof  
 Application: Suitable for holes in materials of 1-4mm (M16 - M50), or M12 from 0.5-2mm



深灰色RAL7001						Dark grey RAL 7001	
ØA mm	>Ø< min mm	>Ø< max mm	M mm	C mm	ØD mm	型号   Art. No.	
12.5	4.0	7.0	0.5-2	5.6	20.0	14.582.33	50
16.5	5.0	9.0	1-4	11.0	21.0	14.582.34	50
20.5	8.0	13.0	1-4	13.4	25.5	14.582.35	50
25.5	11.0	17.0	1-4	15.3	30.5	14.582.36	50
32.5	15.0	20.0	1-4	18.6	38.5	14.582.37	25
40.5	19.0	28.0	1-4	21.7	48.5	14.582.38	25
50.5	27.0	35.0	1-4	25.0	60.5	14.582.39	10



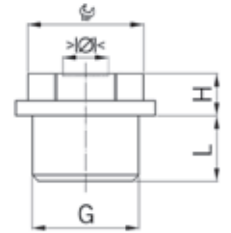
浅灰色RAL7035						Light grey RAL 7035	
ØA mm	>Ø< min mm	>Ø< max mm	M mm	C mm	ØD mm	型号   Art. No.	
12.5	4.0	7.0	0.5-2	5.6	20.0	14.583.03	50
16.5	5.0	9.0	1-4	11.0	21.0	14.583.04	50
20.5	8.0	13.0	1-4	13.4	25.5	14.583.05	50
25.5	11.0	17.0	1-4	15.3	30.5	14.583.06	50
32.5	15.0	20.0	1-4	18.6	38.5	14.583.07	25
40.5	19.0	28.0	1-4	21.7	48.5	14.583.08	25
50.5	27.0	35.0	1-4	25.0	60.5	14.583.09	10



黑色RAL9005						Black RAL 9005	
ØA mm	>Ø< min mm	>Ø< max mm	M mm	C mm	ØD mm	型号   Art. No.	
12.5	4.0	7.0	0.5-2	5.6	20.0	14.582.93	50
16.5	5.0	9.0	1-4	11.0	21.0	14.582.94	50
20.5	8.0	13.0	1-4	13.4	25.5	14.582.95	50
25.5	11.0	17.0	1-4	15.3	30.5	14.582.96	50
32.5	15.0	20.0	1-4	18.6	38.5	14.582.97	25
40.5	19.0	28.0	1-4	21.7	48.5	14.582.98	25
50.5	27.0	35.0	1-4	25.0	60.5	14.582.99	10

材质: 聚乙烯  
温度范围: -20°C / +70°C  
防护等级: IP54

Material: Polyethylene  
Temperature range: -20°C / +70°C  
Protection class: IP 54



浅灰色RAL7035 带开孔		Light grey RAL 7035 with bore hole					型号   Art. No.	
G	>Ø< min mm	>Ø< max mm	 mm	H mm	L mm			
M16x1.5	5.0	10.8	15	7	10	1620.17	100	
M20x1.5	8.0	13.5	19	8	12	1620.20	100	
M25x1.5	9.0	16.0	24	10	12	1620.25	100	
M32x1.5	11.0	22.0	30	11	14	1620.32	50	
M40x1.5	17.0	24.0	37	12	16	1620.40	25	
M50x1.5	22.0	35.0	46	13	18	1620.50	10	
M63x1.5	24.0	43.0	56	15	20	1620.63	10	



浅灰色RAL7035 无开孔		Light grey RAL 7035 without bore hole					型号   Art. No.	
G	>Ø< min mm	>Ø< max mm	 mm	H mm	L mm			
M16x1.5	5.0	10.8	15	7	10	1600.17	100	
M20x1.5	8.0	13.5	19	8	12	1600.20	100	
M25x1.5	9.0	16.0	24	10	12	1600.25	100	
M32x1.5	11.0	22.0	30	11	14	1600.32	100	
M40x1.5	17.0	24.0	37	12	16	1600.40	25	
M50x1.5	22.0	35.0	46	13	18	1600.50	10	
M63x1.5	24.0	43.0	56	15	20	1600.63	10	

